

# Health in Watersheds Info Sheet

## Exploring Connections and Data Complexities

The Watersheds session explored the strengths and weaknesses of working at the watershed scale with human and ecosystem data, and imagined various pathways for working on complex environment, community, and health issues on a watershed scale. The emphasis was on environment, community and health connections, as well as the important data and integration challenges that arise when working at the watershed scale. Participants in the session were informed by watersheds and river systems from across Canada and this interactive and wide-ranging discussion explored new opportunities to amplify integrative approaches to 'health in watersheds'.

### Speakers

Margot Parkes  
Lars Hallstrom

Aita Bezzola  
Christiana Onabola  
Jordan Brubacher

Stacy Jupiter  
Aaron Jenkins

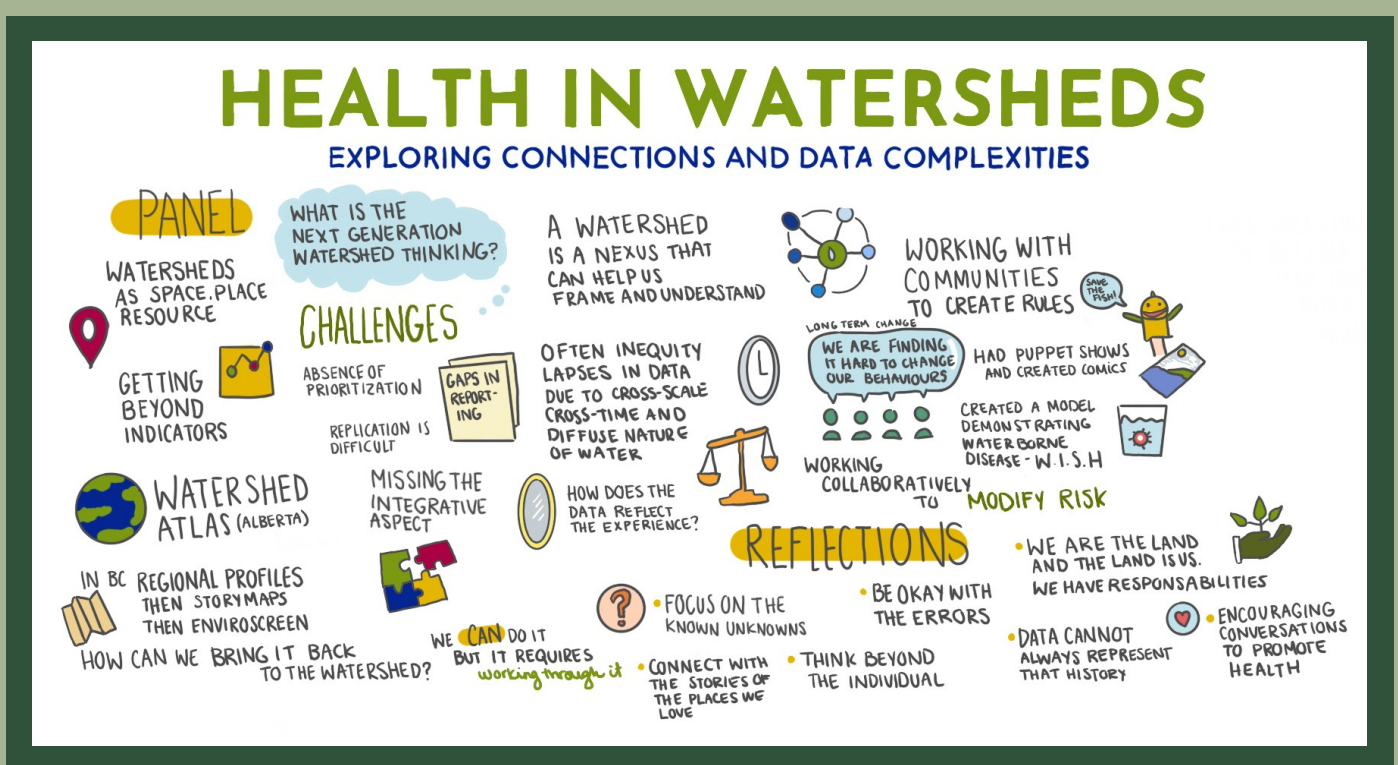


Figure 1. Graphic Recording of Health in Watersheds session by Annika Chiasson.

### Key Takeaways

- Think about moving beyond existing lists of indicators, to promote integrative, holistic work which seeks to understand interaction effects across sectors and policy domains
- A need to move beyond exploratory efforts to actually bring together landscape and human data in analysis on varied spatial units, including at the watershed scale
- Administrative units do not align with the natural boundaries of watershed, necessary to shift our thinking to prioritize equity-seeking populations
- Using systems approaches to watershed management to identify effects of environment on human wellbeing, and supporting Indigenous environmental stewardship and cultural practices

"...our watershed moment came when we started seeing these big floods that were impacting a lot of the downstream flood pans in Fiji"  
- Stacy Jupiter

- **CalEnviroScreen tool:** <https://oehha.ca.gov/calenviroscreen>
- **Converter tool:** <https://github.com/mountainMath/tongfen>
- **Ehrenfeld, D.** (1978). The arrogance of humanism. New York: Oxford University Press. <https://doi.org/10.1080/00139157.1979.9931204>
- **Harris, S. M.** (2011). "Yinka Dinii Ha Ba Ten, the Ways of the People of the Earth: A Social-Ecological Framework for Sustainability". Masters Thesis. UNBC. <https://doi.org/10.24124/2011/bpgub1512>
- **Integrated Regional Profile work:** <https://www2.unbc.ca/cumulative-impacts/tools>
- **The ecological fallacy dilemma:** <https://www.britannica.com/science/ecological-fallacy>
- **The Fiji case studies:** <https://www.planetaryhealthalliance.org/case-studies>
- **WISH:** <https://bit.ly/3EiGGqy>

### Resources

Watch this session: <https://vimeo.com/668816228>

